

Proficiency Testing Scheme GTFCh

Society of Toxicological and Forensic Chemistry



2026

Proficiency Testing Scheme 2026

Organised by ARVECON GmbH on behalf of the GTFCh

TABLE OF CONTENTS

Drugs of Abuse

BTMF - Drugs in Serum	6
DOAB - Drugs in Blood	7
UF - Drugs in Urine	8
SFD - Toxicological Analysis for Driver Fitness Determination	9
IDS - Immunological Drug Screening in Urine	10
DHF - Drugs in Hair	11
DMS - Drug Screening in Hair	12
QSA - Qualitative Screening Analysis	13
GHB - GHB in Serum and Urine	14
SAL - Drugs in Saliva	15

Therapeutic Drug Monitoring

BZF - Benzodiazepines and Z-drugs in Serum	16
OSU - Opioids in Serum and Urine	18
TCA - Tricyclic Antidepressants in Serum	19
TAB - Toxicological Analysis of Diagnostics of Brain Death	20
TDMA - Neuroleptics 1	22
TDMB - Anticonvulsants	23
TDMC - Neuroleptics 2	24
TDMD - Antidepressants 1	25
TDME - Antidepressants 2	26

Alcohol

ETOH - Ethanol in Serum	27
ETB - Ethanol in Blood	28
AMF - Alcohol consumption markers in Serum	29
PETH - Phosphatidylethanol in Blood	30
BGS - Congener Alcohols in Serum	32
ETG - Ethyl glucuronide in Serum and Urine	33
EGH - Ethyl glucuronide in Hair	34

Clinical Toxicology and Chemistry

ATU - Amanitin in Urine	35
MEP - Metanephrine in Plasma	36
NIC - Nicotine and Metabolites in Serum and Urine	37

Miscellaneous

Annotations	39
Conditions of participation	40
Precision criteria	41
Contacts	43

OSU PROFICIENCY TEST

The STM and OMS proficiency tests are being combined into a single test. It will still be possible to determine only the replacement drugs buprenorphine, methadone, and their most important metabolites. The analytes from the former OMS test can be booked and determined as an option. The test will be performed as pilot proficiency test.

BZF PROFICIENCY TEST

Chlordiazepoxide is no longer offered in sample C due to its low stability.

SAL PROFICIENCY TEST

At the time of dispatch of the program booklet, Arvecon is still conducting tests on saliva samples in order to be able to offer more stable sample material. Depending on the results of the tests, we reserve the option of removing substances from the list or temporarily suspending the test.

SHIPPING COSTS

The costs for shipping samples, especially abroad, have increased significantly in recent years. Therefore, starting in 2026, we will charge a fee of EUR 5.- for each shipment to other EU countries and Switzerland.

PILOT PROFICIENCY TESTS (P)

Pilot proficiency testing serves to prepare for new tests. These proficiency tests examine and optimize the suitability of the sample material composition and the sample quantity. The quality and scope of the incoming results are reviewed and evaluated and included in the preparation of a suitable results report. Based on these findings, it may be necessary to make adjustments to the design of the proficiency tests at short notice during the course of the year. These tests are marked with a (P).

PROFICIENCY TESTS BY ARVECON (A)

Some concepts for proficiency testing were developed in collaboration with other scientific or technical partners who have the relevant expertise. These tests are marked with an (A).

DISCOUNT FOR GTFCh MEMBERS

Members of the GTFCh benefit from reduced prices for some proficiency tests. These are listed in the "GTFCh" column.

PROFICIENCY TESTING SCHEME

Dates, Fees, Details

(all prices in EUR plus 19% VAT)

DATES

BTMF 1/26	BTMF 2/26	BTMF 3/26
20-Jan – 02-Mar	26-May – 06-Jul	22-Sep – 03-Nov

PRICES

PRODUCT	Order no.	TEST		ADD. SAMPLES		
		Price	GTFCh	Order no.	Price	GTFCh
Annual subscription 2026 (participation BTMF 1 to 3/26)	1.11.500	845,-	620,-	1.11.550	300,-	270,-
Single participation						
BTMF 1/26	1.11.100	338,-	248,-	1.11.150	100,-	90,-
BTMF 2/26	1.11.200	338,-	248,-	1.11.250	100,-	90,-
BTMF 3/26	1.11.300	338,-	248,-	1.11.350	100,-	90,-

MATERIAL

Sample A: lyophilized serum, 5 mL (2 x 2,5 mL)

For the analytes amphetamine and methamphetamine, it is possible to perform a chiral analysis. In addition to the total concentration, the respective concentrations of the enantiomers are also evaluated and certified. In addition, **papaverine** and/or **noscapine** are added to test for the use of street heroin.

Sample B: different tasks, such as the determination of DOA in whole blood or other current requirements. The sample volume is adapted to the respective requests.

In the proficiency test BTMF 2/26 whole blood is used as matrix for the B-sample. The results of this sample are also certified.

ANALYTES

<u>Cannabinoids</u>	<u>Cocaine/Metabolites</u>	<u>Opiates</u>	<u>Amphetamines</u>
Δ^9 -THC	Cocaine	Morphine	Amphetamine
11-Nor- Δ^9 -carboxy-THC	Benzoylcegonine	MAM	MDMA
11-Hydroxy- Δ^9 -THC	Ecgonine methylester	Codeine	MDE
	Cocaethylene	DHC	MDA
			Methamphetamine

The addition of further drugs from corresponding drug classes is possible. Their determination is optional.

CONCENTRATION RANGES

Cannabinoids 0–250 | Cocaine/Metabolites 0–1500 | Opiates 0–1000 | Amphetamines 0-1000

All concentrations given as µg/L

REQUESTS

Identification and quantitative determination of the analytes

DATES

DOAB 1/26	DOAB 2/26	DOAB 3/26	DOAB 4/26
03-Feb – 02-Mar	05-May – 01-Jun	18-Aug – 14-Sep	03-Nov – 30-Nov

PRICES

PRODUCT	TEST		ADD. SAMPLES	
	Order no.	Price	Order no.	Price
Annual subscription 2026 (participation DOAB 1 to 4/26)	1.12.500	735,-	1.12.550	220,-
Single participation				
DOAB 1/26	1.12.100	210,-	1.12.150	55,-
DOAB 2/26	1.12.200	210,-	1.12.250	55,-
DOAB 3/26	1.12.300	210,-	1.12.350	55,-
DOAB 4/26	1.12.400	210,-	1.12.450	55,-

MATERIAL

2 samples (A, B), lyophilized whole blood, each 2 x 2,5 mL

ANALYTES

Δ ⁹ -THC	Dihydrocodeine	Amphetamine	Ketamine
11-nor-Δ ⁹ -Carboxy-THC	Cocaine	MDMA	Norketamine
11-Hydroxy-Δ ⁹ -THC	Benzoylcegonine	MDE	Buprenorphine
Morphine	Ecgonine methylester	MDA	Norbuprenorphine
MAM	Cocaethylene	Methamphetamine	Methadone
Codeine			EDDP

Aim of the proficiency test is the determination of blood samples for the listed drugs and the quantitative determination of the detected drugs. Each sample contains 0 to 10 analytes. Each analyte is tested twice a year

REQUESTS

Identification and quantitative determination of the detected drugs.

(A) The proficiency test is carried out under the organizational and scientific management of Arvecon GmbH.

DATES

UF 1/26	UF 2/26	UF 3/26
13-Jan – 16-Feb	05-May – 08-Jun	01-Sep – 05-Oct

PRICES

PRODUCT	TEST		ADD. SAMPLES	
	Order no.	Price	Order no.	Price
Annual subscription 2026 (participation UF 1 to 3/26)	1.13.500	330,-	1.13.550	165,-
Single participation				
UF 1/26	1.13.100	132,-	1.13.150	55,-
UF 2/26	1.13.200	132,-	1.13.250	55,-
UF 3/26	1.13.300	132,-	1.13.350	55,-

MATERIAL

Lyophilized urine, 2 x 10 mL

ANALYTEN

5 to 8 DOA, drugs or their metabolites.

REQUESTS

Step 1: immunological tests incl. confirmation of positive results (optional)

Step 2: general unknown analysis

DATES

SFD 1/26	SFD 2/26	SFD 3/26
13-Jan – 16-Feb	05-May – 08-Jun	01-Sep – 05-Oct

PRICES

PRODUKT	TEST		ADD. SAMPLES	
	Order no.	Price	Order no.	Price
Annual subscription 2026 (participation SFD 1 to 3/26)	1.14.500	215,-	1.14.550	84,-
Single participation				
SFD 1/26	1.14.100	85,-	1.14.150	28,-
SFD 2/26	1.14.200	85,-	1.14.250	28,-
SFD 3/26	1.14.300	85,-	1.14.350	28,-

MATERIAL

Lyophilized urine, 10 mL

ANALYTES

The sample is prepared in accordance with the substance list of the assessment criteria for driver fitness determination including parent compounds, related substances (opioids, further active benzodiazepine substances, Z-drugs, amphetamines, and further amphetamine derivatives) including important products of metabolism.

TARGET ANALYTES	CONCENTRATION RANGES, µg/L
THC-COOH	10 - 150
Morphine, Codeine, Dihydrocodeine	25 - 500
Benzoylcegonine	30 - 500
Amphetamine, Methamphetamine, MDMA, MDE, MDA	50 - 500
Methadone, EDDP	20 - 500
Diazepam, Nordiazepam, Oxazepam, Hydroxy-Alprazolam, (Hydroxy-) Bromazepam, 7-Amino-flunitrazepam, Lorazepam, Zolpidem, Zopiclone	50 - 1000
Ethylglucuronide	100 - 1000
Buprenorphine, Norbuprenorphine, Nortilidine, Tilidine, Oxycodone, Tramadol, O-Desmethyldramadol, Fentanyl, Norfentanyl	3 - 200
Creatinine (quantitative determination)	

REQUESTS

Participation possible by:

1. Immunological analysis and quantitative confirmation analysis
2. Quantitative mass spectrometric analysis.

DATES

IDS 1/26	IDS 2/26	IDS 3/26	IDS 4/26
20-Jan – 16-Feb	28-Apr – 26-May	18-Aug – 14-Sep	03-Nov – 30-Nov

PRICES

PRODUCT	TEST		ADD. SAMPLES	
	Order no.	Price	Order no.	Price
Annual subscription 2026 (participation IDS 1 to 4/26)	1.15.500	315,-	1.15.550	108,-
Single participation				
IDS 1/26	1.15.100	90,-	1.15.150	28,-
IDS 2/26	1.15.200	90,-	1.15.250	28,-
IDS 3/26	1.15.300	90,-	1.15.350	28,-
IDS 4/26	1.15.400	90,-	1.15.450	28,-

MATERIAL

Lyophilized urine, 3 mL

ANALYTES

Aim of the proficiency test is the determination of urine samples with immunological methods for the listed drug classes and analytes. Qualitative and if possible qualitative results should be reported as well as the applied cut-off values.

DRUG CLASSES

- Amphetamines
- Methamphetamines
- Benzodiazepines
- Cannabinoids
- Cocaine/metabolites
- Opiates
- Methadone/metabolites
- Barbiturates
- Synthetic cannabinoids
- Tricyclic antidepressants
- Buprenorphine/metabolites
- Nicotine/metabolites
- LSD/metabolites
- Methylphenidate/metabolites

- Creatinine (quantitative determination)

ANALYTES

- Methadone
- EDDP
- MDMA (Ecstasy)
- 6-Monoacetylmorphine
- Carisoprodol/Meprobamate
- Ethyl glucuronide
- Fentanyl
- Gabapentine
- Ketamine
- Oxycodone
- Phencyclidine
- Pregabalin
- Tramadol
- Zolpidem

REQUESTS

Level 1: Immunological tests including confirmatory analyses for the positive results

Level 2: Qualitative general unknown

(A) The proficiency test is carried out under the organizational and scientific management of Arvecon GmbH.

DATES

DHF 1/26	DHF 2/26	DHF 3/26
17-Feb – 23-Mar	02-Jun – 06-Jul	29-Sep – 03-Nov

PRICES

PRODUCT	TEST		ADD. SAMPLES	
	Order no.	Price	Order no.	Price
Annual subscription 2026 (participation DHF 1 to 3/26)	1.16.500	435,-	1.16.550	300,-
Single participation				
DHF 1/26	1.16.100	175,-	1.16.150	100,-
DHF 2/26	1.16.200	175,-	1.16.250	100,-
DHF 3/26	1.16.300	175,-	1.16.350	100,-

MATERIAL

2 samples (A, B), each 250 mg powdered, human hair spiked with drugs

ANALYTES

SAMPLE A		SAMPLE B	
THC	Amphetamine	Oxycodone	7-Aminoflunitrazepam
CBN	MDMA	Tramadol	Oxazepam
CBD	MDA	O-desmethyltramadol	Lorazepam
THC-COOH	MDE	Tilidine	Ketamine
Morphine	Cocaine	Fentanyl	Norketamine
MAM	Benzoylcegonine	Diazepam	Methadone
Codeine	Cocaethylene	Nordiazepam	EDDP
		Alprazolam	Buprenorphine
		Bromazepam	Norbuprenorphine
		Flunitrazepam	

REQUESTS

Quantitative determination of the analytes. The results of both samples are certified.

DATES

DMS 1/26	DMS 2/26
07-Apr – 04-May	25-Aug – 21-Sep

PRICES

PRODUCT	TEST		ADD. SAMPLES	
	Order no.	Price	Order no.	Price
Annual subscription 2026 (participation DMS 1 and 2/26)	1.17.500	335,-	1.17.550	100,-
Single participation				
DMS 1/26	1.17.100	190,-	1.17.150	50,-
DMS 2/26	1.17.200	190,-	1.17.250	50,-

MATERIAL

1 sample, each 200 mg cut or powdered, made of drug user hair.

ANALYTES

Due to the origin of the material, the samples have different compositions. The screening should include the following analytes:

- THC
- Morphine
- MAM
- Amphetamine
- MDMA
- MDA
- Cocaine
- Benzoyllecgonine

The presence of other analytes is possible.

REQUESTS

Quantitative determination of the analytes

DATES

QSA 1/26	QSA 2/26	QSA 3/26
27-Jan – 23-Feb	19-May – 15-Jun	01-Sep – 28-Sep

PRICES

PRODUCT	<u>TEST</u>			<u>ADD. SAMPLES</u>		
	Order no.	Price	GTFCh	Order no.	Price	GTFCh
Annual subscription 2026 (participation QSA 1 to 3/26)	1.18.500	368,-	315,-	1.18.550	190,-	175,-
Single participation						
QSA 1/26	1.18.100	147,-	126,-	1.18.150	63,-	58,-
QSA 2/26	1.18.200	147,-	126,-	1.18.250	63,-	58,-
QSA 3/26	1.18.300	147,-	126,-	1.18.350	63,-	58,-

MATERIAL

sample A: serum, liquid, 5 mL

sample B: urine, liquid, 10 mL

ANALYTEN

One or more drugs, with toxicological case history

REQUESTS

1. Identification of the drugs
2. interpretation of the results

DATES

GHB 1/26	GHB 2/26	GHB 3/26
03-Feb – 23-Feb	02-Jun – 22-Jun	29-Sep – 19-Okt

PRICES

<u>SERUM AND URINE</u> PRODUCT	<u>TEST</u>		<u>ADD. SAMPLES</u>	
	Order no.	Price	Order no.	Price
Annual subscription 2026 (participation GHB 1 to 3/26)	1.19.500	293,-	1.19.550	192,-
Single participation				
GHB 1/26	1.19.100	117,-	1.19.150	64,-
GHB 2/26	1.19.200	117,-	1.19.250	64,-
GHB 3/26	1.19.300	117,-	1.19.350	64,-

<u>ONLY SERUM</u> PRODUCT	<u>TEST</u>		<u>ADD. SAMPLES</u>	
	Order no.	Price	Order no.	Price
Annual subscription 2026 (participation GHB 1 to 3/26)	1.20.500	190,-	1.20.550	108,-
Single participation				
GHB 1/26	1.20.100	76,-	1.20.150	36,-
GHB 2/26	1.20.200	76,-	1.20.250	36,-
GHB 3/26	1.20.300	76,-	1.20.350	36,-

MATERIAL

2 samples (A, B), each 2 mL lyophilized serum; 2 samples (C, D), each 2 mL lyophilized urine

ANALYT

Gamma hydroxybutyric acid (GHB)

REQUESTS

Quantification of the analyt

DATES

SAL 1/26	SAL 2/26
07-Apr – 04-May	08-Sep – 05-Oct

PRICES

PRODUCT	TEST		ADD. SAMPLES	
	Order no.	Price	Order no.	Price
Annual subscription 2026 (participation SAL 1 and 2/26)	1.21.500	260,-	1.21.550	96,-
Single participation				
SAL 1/26	1.21.100	140,-	1.21.150	48,-
SAL 2/26	1.21.200	140,-	1.21.250	48,-

MATERIAL

2 samples (A + B), lyophilized saliva, each 1,0 mL

ANALYTES

Cannabinoids:	THC
Amphetamines:	Amphetamine, MDMA, Methamphetamine
Cocaine and metabolites:	Cocaine, Benzoylecgonine
Opiates/Opioids:	6-Acetylmorphine, Codeine, Morphine, Buprenorphine, Norbuprenorphine, Methadone, EDDP
Benzodiazepines:	Diazepam, Nordiazepam, Flunitrazepam, Oxazepam

REQUESTS

Identification and quantitative determination of the analytes

DATES

BZF 1/26	BZF 2/26	BZF 3/26
07-Jan – 02-Feb	21-Apr – 18-May	25-Aug – 21-Sep

PRICES

PRODUCT	Order no.	TEST		ADD. SAMPLES		
		Price	GTFCh	Order no.	Price	GTFCh
Annual subscription 2026 (participation BZF 1 and 3/26)	2.30.500	383,-	318,-	2.30.550	223,-	180,-
Single participation						
BZF 1/26	2.30.100	153,-	127,-	2.30.150	75,-	60,-
BZF 2/26	2.30.200	153,-	127,-	2.30.250	75,-	60,-
BZF 3/26	2.30.300	153,-	127,-	2.30.350	75,-	60,-

MATERIAL

2 samples (A+B), lyophilized serum, each 3 mL

ANALYTES

Sample A		Sample B	
Diazepam	200-2000	Flunitrazepam	10-25
Nordiazepam	200-1500	Norflunitrazepam	10-50
Bromazepam	50-250	7-Aminoflunitrazepam	10-70
Clonazepam	5-100	Oxazepam	250-1000
Temazepam	20-1000	Midazolam	50-250
Alprazolam	5-100	α-OH-Midazolam	50-250
Zolpidem	50-250	Lorazepam	20-300
Nitrazepam	20-200	Lormetazepam	1-25
		Zopiclone	10-100

All concentrations given as µg/L

REQUESTS

Quantitative determination of the analytes

SAMPLE C

Sample C can be ordered additionally and completes the list of analytes of the A and B sample.

PRICES

PRODUCT	TEST			ADD. SAMPLES		
	Order no.	Price	GTFCh	Order no.	Price	GTFCh
Annual subscription 2026 (participation BZF 1 to 3/26)	2.31.500	181,-	166,-	2.31.550	99,-	84,-
Single participation						
BZF 1/26	2.31.100	72,-	66,-	2.31.150	33,-	28,-
BZF 2/26	2.31.200	72,-	66,-	2.31.250	33,-	28,-
BZF 3/26	2.31.300	72,-	66,-	2.31.350	33,-	28,-

MATERIAL

Sample C, lyophilized serum, 1 x 3 mL

ANALYTES

Sample C

Clobazam	30-300	3-OH-Bromazepam	25-200
Norclonazepam	300-2500	7-Aminoclonazepam	10-75
Flurazepam	10-150	7-Aminonitrazepam	50-200
Desalkylflurazepam	25-100	α-OH-Alprazolam	10-75
Triazolam	2-30	Estazolam	50-250
α-OH-Triazolam	5-50	Medazepam	150-1000
Demoxepam	400-1000	Prazepam	200-800

All concentrations given as µg/L

REQUESTS

Quantitative determination of the analytes

DATES

OSU 1/26	OSU 2/26	OSU 3/26
07-Jan – 02-Feb	21-Apr – 18-May	25-Aug – 21-Sep

PRICES

PRODUCT	Order no.	TEST		ADD. SAMPLES		
		Price	GTFCh	Order no.	Price	GTFCh
Annual subscription 2026 (participation OSU 1 to 3/26)	2.40.500	405,-	368,-	2.40.550	195,-	150,-
Single participation						
OSU 1/26	2.40.100	162,-	147,-	2.40.150	65,-	50,-
OSU 2/26	2.40.200	162,-	147,-	2.40.250	65,-	50,-
OSU 3/26	2.40.300	162,-	147,-	2.40.350	65,-	50,-

ONLY REPLACEMENT DRUGS						
Annual subscription 2026	2.32.500	280,-	243,-	2.32.550	195,-	150,-
Single participation						
OSU ^(ST) 1/26	2.32.100	112,-	97,-	2.32.150	65,-	50,-
OSU ^(ST) 2/26	2.32.200	112,-	97,-	2.32.250	65,-	50,-
OSU ^(ST) 3/26	2.32.300	112,-	97,-	2.32.350	65,-	50,-

MATERIAL

Sample A: lyophilized serum, 2,5 mL
Sample B: lyophilized urine, 2,5 mL

ANALYTES

SERUM			URINE		
Replacement drugs			Futher analytes		
Buprenorphine	1-20	0,5-25	Oxycodone	5 -100	25-250
Norbuprenorphine	2-40	0,5-50	Hydrocodone	5-150	25-250
Methadone	10-500	10-1000	Hydromorphone	5-150	25-250
EDDP	10-250	10-1000	Tilidine	5-150	25-250
			Nortilidine	5-150	25-250
			Tramadol	5-1000	50-250
			O-Desmethy/lt tramadol	50-500	50-250
			Fentanyl	0,2-15	0,5-5
			Norfentanyl	0,2-15	0,5-5

All concentrations given as µg/L

REQUESTS

Quantitative determination of the analytes

DATES

TCA 1/26	TCA 2/26	TCA 3/26	TCA 4/26
13-Jan – 09-Feb	14-Apr – 11-May	30-Jun – 27-Jul	06-Oct – 03-Nov

PRICES

PRODUCT	Order no.	TEST		ADD. SAMPLES		
		Price	GTFCh	Order no.	Price	GTFCh
Annual subscription 2026 (participation TCA 1 to 4/26)	2.33.500	490,-	431,-	2.33.550	318,-	268,-
Single participation						
TCA 1/26	2.33.100	140,-	123,-	2.33.150	80,-	69,-
TCA 2/26	2.33.200	140,-	123,-	2.33.250	80,-	69,-
TCA 3/26	2.33.300	140,-	123,-	2.33.350	80,-	69,-
TCA 4/26	2.33.400	140,-	123,-	2.33.450	80,-	69,-

MATERIAL

4 samples (A, B, C, D), lyophilized serum, each 2,5 mL

ANALYTES

Sample A B	Sample C D
Doxepine	Imipramine
Nordoxepine	Desipramine
Amitriptyline	Clomipramine
Nortriptyline	Norclomipramine
Trimipramine	Maprotiline
Opipramol	DesmethyImaprotiline
	Protriptyline

All analytes 10 - 1500 µg/L

REQUESTS

Quantitative determination of the analytes

DATES

TAB 1/26	TAB 2/26
03-Feb – 23-Feb	25-Aug – 14-Sep

PRICES

PRODUCT	TEST		ADD. SAMPLES	
	Order no.	Price	Order no.	Price
Annual subscription 2026 (participation TAB 1 and 2/26)	2.34.500	224,-	2.34.550	80,-
Single participation				
TAB 1/26	2.34.100	127,-	2.34.150	40,-
TAB 2/26	2.34.200	127,-	2.34.250	40,-

MATERIAL

2 samples, lyophilized serum, each 2,5 mL

ANALYTEN

Thiopental	0,5-3,0
Pentobarbital	0,5-5,0
Phenobarbital	2,0-50,0
Methohexital	0,25-3,0
Etomidate	0,1-0,5
Propofol	2,0-8,0

All concentrations given as mg/L

Midazolam	20,0-500,0
Diazepam	100,0-500,0
Nordiazepam	100,0-500,0
Fentanyl	1,0-10,0
Sufentanil	0,5-5,0
Piritramide	3,5-14,0

All concentrations given as µg/L

REQUESTS

Quantitative determination of the analytes

finden® KURA

B-One®, BGTurbo®, BGS™ & ASPC™



High-quality β -glucuronidases and arylsulfatases for fast, efficient hydrolysis



- Recombinant design
- Consistent batch quality
- High purity
- No interference
- Long column life
- Automation capabilities

If you would like to learn more about our products,
please feel free to contact us!



Specialty Diagnostix GmbH

Sailerwöhr 16, 94032 Passau, Germany

+49 (0)851 988 4930 0

+49 (0)851 988 4930 8

info@specialtydiagnostix.de

www.specialtydiagnostix.de



SDx_AN_KURA_EN_Rev_A_2025

DATES

TDMA 1/26	TDMA 2/26	TDMA 3/26
27-Jan – 23-Feb	12-May – 08-Jun	08-Sep – 05-Oct

PRICES

PRODUCT	Order no.	TEST		ADD. SAMPLES		
		Price	GTFCh	Order no.	Price	GTFCh
Annual subscription 2026 (participation TDMA 1 to 3/26)	2.35.500	400,-	363,-	2.35.550	240,-	207,-
Single participation						
TDMA 1/26	2.35.100	160,-	145,-	2.35.150	80,-	69,-
TDMA 2/26	2.35.200	160,-	145,-	2.35.250	80,-	69,-
TDMA 3/26	2.35.300	160,-	145,-	2.35.350	80,-	69,-

MATERIAL

4 samples (A, B, C, D), lyophilized serum, each 4,0 mL

ANALYTES

SAMPLE A/B		SAMPLE C/D	
Clozapine	100-1500	Risperidone	1-15
N-Desmethyleclozapine	100-1500	Paliperidone	5-150
Olanzapine	10-100	Perazine	25-600
Norolanzapine	10-100	Ziprasidone	10-150
Quetiapine	25-600	Levomepromazine	15-250
Norquetiapine	50-300	Promethazine	50-500
Amisulpride	50-500	Chlorprothixene	10-400
Thioridazine	50-300		

All concentrations given as µg/L

REQUESTS

Quantitative determination of the analytes

DATES

TDMB 1/26	TDMB 2/26	TDMB 3/26
10-Feb – 09-Mar	26-May – 22-Jun	22-Sep – 19-Oct

PRICES

PRODUCT	Order no.	TEST		ADD. SAMPLES		
		Price	GTFCh	Order no.	Price	GTFCh
Annual subscription 2026 (participation TDMB 1 to 3/26)	2.36.500	390,-	350,-	2.36.550	225,-	192,-
Single participation						
TDMB 1/26	2.36.100	156,-	140,-	2.36.150	75,-	64,-
TDMB 2/26	2.36.200	156,-	140,-	2.36.250	75,-	64,-
TDMB 3/26	2.36.300	156,-	140,-	2.36.350	75,-	64,-

MATERIAL

2 samples (A, B), lyophilized serum, 4,0 mL

ANALYTES

Carbamazepine	1-15
10-OH-Carbamazepine ...	5-50
Oxcarbazepine	5-50
Felbamate	15-100
Pregabalin	0,5-10
Gabapentin	1-30
Tiagabine	0,01-0,25
Levetiracetam	5-50
Topiramate	1-15
Vigabatrin	1-20
Lamotrigine	2-20
Lacosamide	1-20
Rufinamide	2-40
Zonisamide	5-60
Sultiam	2-8

All concentrations given as mg/L

REQUESTS

Quantitative determination of the analytes

DATES

TDMC 1/26	TDMC 2/26	TDMC 3/26
24-Feb – 23-Mar	09-Jun – 06-Jul	06-Oct – 03-Nov

PRICES

PRODUCT	Order no.	TEST		ADD. SAMPLES		
		Price	GTFCh	Order no.	Price	GTFCh
Annual subscription 2026 (participation TDMC 1 to 3/26)	2.37.500	390,-	350,-	2.37.550	225,-	192,-
Single participation						
TDMC 1/26	2.37.100	156,-	140,-	2.37.150	75,-	64,-
TDMC 2/26	2.37.200	156,-	140,-	2.37.250	75,-	64,-
TDMC 3/26	2.37.300	156,-	140,-	2.37.350	75,-	64,-

MATERIAL

2 samples (A, B), lyophilized serum, each 4,0 mL

ANALYTEN

SAMPLE A/B	
Aripiprazol	50-500
Dehydroaripiprazol	50-500
Flupenthixol	1,0-25
Fluphenazin	0,5-15
Haloperidol	1,0-25
Sertindol	25-150
Sulpirid	100-1000
Zotepin	10-250
Melperon	20-150
Pipamperon	50-500
Chlorpromazin	30-400
Prothipendyl	5-20
Zuclopenthixol	50-500

All concentrations given as µg/L

REQUESTS

Quantitative determination of the analytes

DATES

TDMD 1/26	TDMD 2/26	TDMD 3/26
10-Mar – 07-Apr	23-Jun – 20-Jul	20-Oct – 16-Nov

PRICES

PRODUKT	RINGVERSUCH			ADD. SAMPLES		
	Order no.	Price	GTFCh	Order no.	Price	GTFCh
Annual subscription 2026 (participation TDMD 1 to 3/26)	2.38.500	378,-	338,-	2.38.550	225,-	192,-
Single participation						
TDMD 1/26	2.38.100	151,-	135,-	2.38.150	75,-	64,-
TDMD 2/26	2.38.200	151,-	135,-	2.38.250	75,-	64,-
TDMD 3/26	2.38.300	151,-	135,-	2.38.350	75,-	64,-

MATERIAL

2 samples (A, B), lyophilized serum, each 4,0 mL

ANALYTEN

Duloxetine	10 -150
Fluoxetine	25-500
Norfluoxetine	25-500
Fluvoxamine	25-250
Mianserine	10-150
Mirtazapine	25-150
Paroxetine	10-150
Reboxetine	25-300
Sertraline	10-250
Venlafaxine	25-400
Desmethylvenlafaxine ..	25-400
Citalopram	25-150
Trazodone	600-1200

All concentrations given as µg/L

REQUESTS

Quantitative determination of the analytes

DATES

TDME 1/26	TDME 2/26	TDME 3/26
24-Mar – 20-Apr	07-Jul – 03-Aug	03-Nov – 30-Nov

PRICES

PRODUCT	Order no.	TEST		ADD. SAMPLES		
		Price	GTFCh	Order no.	Price	GTFCh
Annual subscription 2026 (participation TDME 1 to 3/26)	2.39.500	378,-	338,-	2.39.550	225,-	192,-
Single participation						
TDME 1/26	2.39.100	151,-	135,-	2.39.150	75,-	64,-
TDME 2/26	2.39.200	151,-	135,-	2.39.250	75,-	64,-
TDME 3/26	2.39.300	151,-	135,-	2.39.350	75,-	64,-

MATERIAL

2 samples (A, B), lyophilized serum, each 4,0 mL

ANALYTES

SAMPLE A/B	
Bupropione	10-100
Hydroxybupropione	850-1500
Milnacipran	50-125
Moclobemide	300-1000
Clomethiazol	100-5000
Dosulepine	45-100
Methylphenidate	10-25
Ritalinic acid	100-250
Atomoxetine	200-1000
Tianeptine	30-100
Tranlycypromine	10-50
Vilazodone	30-70
Vortioxetine	10-50

All concentrations given as µg/L

REQUESTS

Quantitative determination of the analytes

DATES

ETOH 1/26	ETOH 2/26	ETOH 3/26	ETOH 4/26
13-Jan – 02-Feb	07-Apr – 27-Apr	30-Jun – 20-Jul	29-Sep – 19-Oct

PRICES

PRODUKT	Order no.	TEST		ADD. SAMPLES		
		Price	GTFCh	Order no.	Price	GTFCh
Annual subscription 2026 (participation ETOH 1 to 4/26)	3.50.500	312,-	277,-	3.50.550	184,-	164,-
Single participation						
ETOH 1/26	3.50.100	89,-	79,-	3.50.150	46,-	41,-
ETOH 2/26	3.50.200	89,-	79,-	3.50.250	46,-	41,-
ETOH 3/26	3.50.300	89,-	79,-	3.50.350	46,-	41,-
ETOH 4/26	3.50.400	89,-	79,-	3.50.450	46,-	41,-

MATERIAL

2 samples (A, B), lyophilized serum, each 2,5 mL

ANALYT

Ethanol

REQUESTS

Quantitative determination with the GC and the ADH method according to the guidelines of the Federal Health Authority BGA or its current adaptation made by the German Forensic Society (DGRM), the German Society for Traffic Medicine (DGVM) and the Society for Toxicological and Forensic Chemistry (GTFCh).

As a permissible variation from a target concentration <1,000 g/kg of whole blood or 1,236 g/l of serum a maximum of ± 0,05 g/kg (0,062 g/l) is valid, of a target concentration >1,000 g/kg of whole blood or 1,236 g/l of serum a maximum of ± 5%.

DATES

ETB 1/26	ETB 2/26	ETB 3/26	ETB 4/26
20-Jan – 09-Feb	21-Apr – 11-May	07-Jul – 27-Jul	06-Oct – 26-Oct

PRICES

PRODUKT	RINGVERSUCH		ADD. SAMPLES	
	Order no.	Price	Order no.	Price
Annual subscription 2026 (participation ETB 1 to 4/26)	3.51.500	312,-	3.51.550	212,-
Single participation				
ETB 1/26	3.51.100	89,-	3.51.150	53,-
ETB 2/26	3.51.200	89,-	3.51.250	53,-
ETB 3/26	3.51.300	89,-	3.51.350	53,-
ETB 4/26	3.51.400	89,-	3.51.450	53,-

MATERIAL

2 samples (A+B), liquid whole blood, each 2,5 mL

ANALYT

Ethanol

REQUESTS

Quantitative determination with GC- and/or ADH method

Accepted deviation from the target value:

- 1.) $\leq 1,0 \text{ g/kg} \pm 0,05 \text{ g/kg}$
- 2.) $> 1,0 \text{ g/kg} \pm 5\%$

(A) The proficiency test is carried out under the organizational and scientific management of Arvecon GmbH.

DATES

AMF 1/26	AMF 2/26	AMF 3/26	AMF 4/26
20-Jan – 16-Feb	28-Apr – 26-May	18-Aug – 14-Sep	03-Nov – 30-Nov

PRICES

PRODUKT	TEST		ADD. SAMPLES	
	Order no.	Price	Order no.	Price
Annual subscription 2026 (participation AMF 1 to 4/26)	3.52.500	301,-	3.52.550	184,-
Single participation				
AMF 1/26	3.52.100	86,-	3.52.150	46,-
AMF 2/26	3.52.200	86,-	3.52.250	46,-
AMF 3/26	3.52.300	86,-	3.52.350	46,-
AMF 4/26	3.52.400	86,-	3.52.450	46,-

MATERIAL

2 samples (A, B), lyophilized serum, each 1,0 mL

ANALYT

CDT

REQUESTS

Quantitative determination of the analyte

DATES

PETH 1/26	PETH 2/26	PETH 3/26
10-Feb – 09-Mar	09-Jun – 06-Jul	06-Oct – 03-Nov

PRICES

PRODUCT	TEST		ADD. SAMPLES	
	Order no.	Price	Order no.	Price
Annual subscription 2026 (participation PETH 1 to 3/26)	3.53.500	280,-	3.53.550	186,-
Single participation				
PETH 1/26	3.53.100	112,-	3.53.150	62,-
PETH 2/26	3.53.200	112,-	3.53.250	62,-
PETH 3/26	3.53.300	112,-	3.53.350	62,-

MATERIAL

2 samples (A, B), lyophilized blood, each 500 µL (authentic or spiked samples)

ANALYT

Phosphatidylethanol (PEth 16:0/18:1)

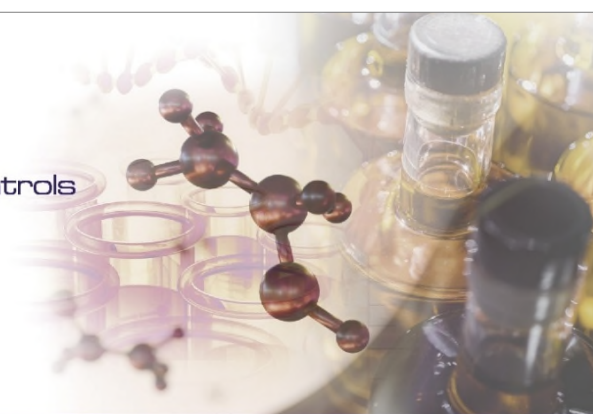
REQUESTS

Quantitative determination of the analyte

(A) The proficiency test is carried out under the organizational and scientific management of Arvecon GmbH.



Accuracy controls



PEth Analysis – Trusted Quality. Proven Performance.

Since 2010, ACQ Science has been a leading provider of reliable QC materials for a wide range of analytical methods. In response to the growing demand for the analysis of the direct alcohol marker PEth, we expanded our portfolio in 2016 to include high-quality PEth testing solutions:

- Authentic whole blood containing PEth as well as whole blood controls spiked with the PEth 16:0/18:1 isoform (target values at 40 and 300 ng/mL) currently on stock
- Stable, lyophilized controls and standards with a shelf-life of up to 5 years – customized to your concentration requirements
- In partnership with HemaXis, a trademark of DBS System SA, ACQ Science delivers comprehensive solutions for quality control and sample collection, ensuring efficient, streamlined PEth analysis on dried blood spots (DBS)



For more information, please get in touch with us at info@acq-science.de
HemaXis is a trademark of DBS System SA – for more information, visit www.hemaxis.com

Certified according to
EN ISO 9001
EN ISO 13485

ACQ Science GmbH
Etzwiesenstraße 37
72108 Rottenburg
Germany

Phone: +49 (0)7457 94693-0
Fax: +49 (0)7457 94693-69
Email: info@acq-science.de
Web: www.acq-science.de



DATES

BGS 1/26

BGS 2/26

10-Mar – 07-Apr

01-Sep – 28-Sep

PRICES

PRODUCT	TEST		ADD. SAMPLES	
	Order no.	Price	Order no.	Price
Annual subscription 2026 (participation BGS 1 and 2/26)	3.54.500	276,-	3.54.550	136,-
Single participation				
BGS 1/26	3.54.100	157,-	3.54.150	68,-
BGS 2/26	3.54.200	157,-	3.54.250	68,-

MATERIAL

Liquid serum, 1 x 2,5 mL

ANALYTES

- Methanol
- Propan-1-ol
- Propan-2-ol
- 2-Methylpropan-1-ol
- Butan-2-ol
- Butan-2-one
- Butan-1-ol
- 2- u. 3-Methylbutan-1-ol
- Acetone
- Isopropanol

REQUESTS

Quantitative determination of the analytes

DATES

ETG 1/26	ETG 2/26	ETG 3/26
24-Feb – 23-Mar	16-Jun – 13-Jul	13-Oct – 09-Nov

PRICES

PRODUCT	TEST		ADD. SAMPLES	
	Order no.	Price	Order no.	Price
Annual subscription 2026 (participation ETG 1 to 3/26)	3.55.500	315,-	3.55.550	162,-
Single participation				
ETG 1/26	3.55.100	126,-	3.55.150	54,-
ETG 2/26	3.55.200	126,-	3.55.250	54,-
ETG 3/26	3.55.300	126,-	3.55.350	54,-

MATERIAL

Sample A: lyophilized serum, 2,5 mL
Sample B: lyophilized urine, 2,5 mL

ANALYTES

Ethyl glucuronide, Ethylsulfate

Concentration ranges:

Serum 0,1 - 5
Urine 0,1 - 10

All concentrations given as mg/L

REQUESTS

Quantitative determination of the analytes

DATES

EGH 1/26	EGH 2/26	EGH 3/26
17-Feb – 16-Mar	02-Jun – 29-Jun	29-Sep – 26-Oct

PRICES

PRODUCT	TEST		ADD. SAMPLES	
	Order no.	Price	Order no.	Price
Annual subscription 2026 (participation EGH 1 to 3/26)	3.56.500	305,-	3.56.550	180,-
Single participation				
EGH 1/26	3.56.100	122,-	3.56.150	60,-
EGH 2/26	3.56.200	122,-	3.56.250	60,-
EGH 3/26	3.56.300	122,-	3.56.350	60,-

MATERIAL

2 samples (A, B): each 100 mg powdered or cut, authentic human hair. Where available, samples with cut hair are offered in the EGH 2/26 proficiency test.

ANALYT

Ethyl glucuronide

REQUESTS

Quantitative determination of the analyte

DATES

ATU 1/26	ATU 2/26
18-Aug – 07-Sep	13-Oct –03-Nov

PRICES

PRODUCT	TEST		ADD. SAMPLES	
	Order no.	Price	Order no.	Price
Annual subscription 2026 (participation ATU 1 and 2/26)	4.70.500	184,-	4.70.550	80,-
Single participation				
ATU 1/26	4.70.100	105,-	4.70.150	40,-
ATU 2/26	4.70.200	105,-	4.70.250	40,-

MATERIAL

2 samples (A, B), lyophilized urine, 1,2 mL

ANALYT

Amanitin

REQUESTS

1. Quantitative determination of the analytes
2. Interpretation of the results

DATES

MEP 1/26	MEP 2/26	MEP 3/26
10-Feb – 09-Mar	02-Jun – 29-Jun	22-Sep – 19-Okt

PRICES

PRODUKT	RINGVERSUCH		ADD. SAMPLES	
	Order no.	Price	Order no.	Price
Annual subscription 2026 (participation MEP 1 to 3/26)	4.71.500	200,-	4.71.550	132,-
Single participation				
MEP 1/26	4.71.100	80,-	4.71.150	44,-
MEP 2/26	4.71.200	80,-	4.71.250	44,-
MEP 3/26	4.71.300	80,-	4.71.350	44,-

MATERIAL

2 samples (A+B), lyophilized plasma, each 2,5 mL

ANALYTES

Metanephrine	50 – 500 ng/L
Normetanephrine	50 – 750 ng/L

REQUESTS

Quantitative determination of the analytes

DATES

NIC 1/26	NIC 2/26
07-Apr – 04-May	08-Sep – 05-Oct

PRICES

PRODUKT	TEST		ADD. SAMPLES	
	Order no.	Price	Order no.	Price
Annual subscription 2026 (participation NIC 1 and 2/26)	4.72.500	128,-	4.72.550	86,-
Single participation				
NIC 1/26	4.72.100	73,-	4.72.150	43,-
NIC 2/26	4.72.200	73,-	4.72.250	43,-

MATERIAL

Sample A, lyophilized serum, each 2.5 mL
Sample B, lyophilized urine, each 2.5 mL

ANALYTEN

Nicotine	5 - 5.000
Cotinine	5 - 8.000
3-OH-Cotinine ...	25 - 25.000
Anabasine	2 - 500

All concentrations given as µg/L

REQUESTS

Quantitative determination of the analytes

1. PARTICIPATION

All laboratories working in the field of forensic or clinical toxicology or related fields may participate.

2. ANALYTICAL METHODS

If not stated otherwise in the requests regarding the proficiency test no special methods for analysis are prescribed.

3. REGISTRATION

Registration for participation is possible up to the start of the EQA scheme, but for organizational reasons this should be done at least one week before the start. Later registrations within the period of the respective EQA scheme are only possible on request.

4. SUBSCRIPTION AND SINGLE TEST

Enrolment may be by subscription or for an single test.

5. SUBMISSION OF RESULTS

The results of the proficiency tests may be submitted by post, fax, e-mail or via our website.

6. DEADLINE FOR RESULTS AND LATE ENTRIES

The results must have been reported by the scheduled deadline. Extensions are possible in justified cases after agreement with the test organizer. If the results are received late, the participant will receive a results report without including their own results.

7. EVALUATION

The evaluation corresponds to acknowledged scientific criteria which are supervised by accompanying working groups and/or expert groups.

8. SUBSEQUENT CORRECTIONS OF RESULTS REPORTS

Incorrect entries in the result forms can only be corrected until the reporting deadline of the respective EQA scheme. Subsequent corrections are only possible in justified cases with the approval of the GTFCh coordinators.

9. CORRECTION OF REPORTS

The participants receive their reports of results by post. In case of an incorrect analysis the participants in question are entitled to receive a corrected report. Further claims do not exist.

10. FAILURE OF TESTS

If a proficiency test cannot take place, already paid participation fees will be refunded.

1. PERIODS FOR REGISTRATION

To guarantee a punctual process of the proficiency tests, it is necessary that the results are submitted to ARVECON up to the indicated deadline. This also applies to results sent by post.. Therefore, we kindly ask you to submit your post in time or to report us your results in advance by fax or internet about your results. We recommend to transmit the results by entering them in the formula on our homepage, because only then you will receive an additional confirmation of receipt by automatic reply.

2. RESULT FORMS

All result forms and reports are available in German and English. The participants coming from a non-German speaking country automatically receive the English version of all forms. Change requests have to be indicated on the registration form or communicated separately to ARVECON

3. REPORTING OF THE RESULTS

All handwritten entries have to be made carefully and legible. Errors which are caused by a bad legibility of the entries cannot be corrected subsequently. All handwritten entries have to be made carefully and legible. Errors which are caused by a bad legibility of the entries cannot be corrected subsequently.

4. RECLAMATIONS

If you should detect errors in the analysis or the certificate after having received the results of the proficiency tests, we kindly ask you to immediately inform ARVECON. If the error has been caused by yourself by a wrong transmission of the data, according to the decision of the board of the GTFCh, no subsequent error correction is possible, even when submitting the analysis documents.

5. CORRESPONDENCE

All written requests (e-mail, post) to ARVECON can be made in German, English or French. Unfortunately, requests made in other languages can not be dealt with.

6. EVALUATION TIME

At the moment, the period of analysis of the proficiency tests comes to approx. 4 weeks.

7. SAMPLES MATERIAL

The management and the organizers of the proficiency tests may change the ingredients and the volume of the samples used for proficiency tests if this proves to be favourable and/or necessary.

8. SHIPPING OF THE SAMPLES

The shipment of the proficiency test samples usually takes place 2 - 5 working days before the official start of the proficiency test. Especially when shipping abroad, delays in delivery may occur. We have therefore included an additional week in the testing periods. If you have not received the samples one week after the official start date, please notify us by phone or e-mail so that we can arrange further steps.

Shipping outside Europe will be done by express service. The costs for this will be charged separately. Costs per shipment: North America EUR 35, - | South America, Asia, Africa EUR 45, - | Oceania EUR 60, -

9. PRICES

All prices stated for the proficiency tests are net prices plus the legally prescribed value added tax. Packaging and standard shipping are included in the prices. All prices stated for the proficiency tests are net prices plus the legally prescribed value added tax. Packaging and standard shipping are included in the prices.

10. PAYMENT

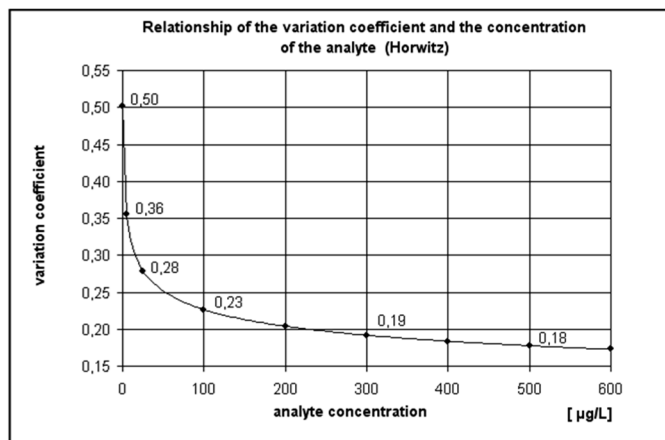
After invoicing, payment can be made by bank transfer or credit card (Mastercard, Visa). The transmission of the credit card data can be done in writing, by e-mail or via our homepage. Checks cannot be accepted.

By means of the GTFCh proficiency tests for the quantitative determination of single analytes it is possible to analyse and represent the accuracy of measurement actually to be reached according to the respective state of analysis technology in an interlaboratory comparison. Besides, the proficiency tests offer the laboratories both support and clues regarding the improvement and control as well as a forum to represent the own analytical performance.

In 1982, Horwitz [1] found out by means of 150 proficiency tests carried out independently of each other that the coefficient of variation is to be represented on average as a function of concentration:

$$VC = 2 \cdot (1 - 0.5 \log C)$$

VC = variation coefficient (%), C = concentration of the analytes as kg/L!



The standard deviation between the preferred concentration range.

Analogous to the formula, the coefficient of variation is doubling if the concentration of the analyte drops by the factor 100 (see also figure above). These now more than 30 years old data have been determined in different ranges of concentration with various analytes and five different analysis techniques, namely chromatography, AAS, spectrometry, polarography, and bioassays. As regards the 'Horwitz function' it is indicated that it is independent of samples, analytes, and methods. However, because of improvements made in the analysis technique and considering the current results of proficiency tests, there are justifiable doubts regarding its general validity. Both the detection limit and the limit of determination of a measuring method are not considered in the Horwitz function. Today, in the course of the indispensable validation of analysis techniques and with the help of user-friendly EDP programmes, these limits may also be determined at every new calibration during the laboratory routines. It is not rare that measured values being between the limit of determination and the detection limit are communicated, though in this range the quantitative determination should not be indicated any more because of the increasing measurement uncertainty to be determined statistically. Nevertheless, the coefficients of variation deduced from the equation proved to be a suitable standard to assess the efficiency at single analysis techniques or in the interlaboratory comparison. Another possibility to evaluate the results of proficiency tests is to analyse the submitted data according to DIN ISO 5725 [2]. The standard deviation of reproducibility to be calculated according to DIN ISO 5725 is only

reproducibility to be calculated according to DIN ISO 5725 is only depending on the efficiency of the participants in the proficiency test. In case of stronger diverging data pools this leads to an extension of the evaluation limits compared with the Horwitz method [3]. To calculate the evaluation limits, the method according to DIN ISO 5725 requires, however, a multiple determination (at least two independent measured values) of the analyte.

Literature:

- [1] HORWITZ W (1982)
Evaluation of analytical methods used for regulation of foods and drugs. Anal Chem 54 (1): 67A -76A
- [2] DIN ISO 5725 (1994)
International Organization for Standardization. Genauigkeit (Richtigkeit und Präzision) von Messverfahren und Messergebnissen. ISO Central Secretariat, Chemin de Blandonnet 8, CP 401, 1214 Vernier, Genf, Schweiz
- [3] Herbold M, Schmitt G, Aderjan R (2003)
Auswertung forensischer Ringversuche nach DIN ISO 5725, Beispiel: Haare - Ringversuche 2002. In: Symposium der GTFCh, Mosbach/Baden, Hrsg.: F. Pragst, R. Aderjan, Dr. Dieter Helm Verlag, Heppenheim

CONTACTS

Proficiency Testing Organisation

ARVECON GmbH
Kiefernweg 4
69190 Walldorf
Germany

Tel.	+49 6227 6909 170
Fax	+49 6227 6909 178
E-mail	info@arvecon.de
Web	www.arvecon.com

ARVECON is certified according ISO 9001:2015.

Important e-mail addresses

Inquiries	info@arvecon.de
Order	order@arvecon.de
Accounting	fibu@arvecon.de
Results	results@arvecon.de

Coordinators

Dr. Georg Schmitt Institute of Legal Medicine and Traffic Medicine University Hospital Heidelberg, Germany	E-mail	georg.schmitt@med.uni-heidelberg.de
--	--------	-------------------------------------

Prof. Dr. Gisela Skopp Forensic Toxicological Center (FTC), Munich, Germany	E-mail	g.skopp@ftc-muenchen.de
---	--------	-------------------------

Office, GTFCh

PD Dr. Frank T. Peters Institut für Rechtsmedizin Universitätsklinikum Jena Am Klinikum 1, F2 07747 Jena Germany	Tel.	+49 3641 9-35584
	Fax:	+49 3641 9-37902
	E-mail	office@gtfch.org

Please send your application for membership of GTFCh to this address

Präsident der GTFCh

Prof. Dr. Volker Auwärter
Institute of Legal Medicine
University Hospital Freiburg
Albertstr. 9
79104 Freiburg
Germany