



Proficiency Testing Scheme

GTFCh

2017

Proficiency Testing Scheme 2017

Contact	3
----------------	---

Drugs of Abuse

BTMF - Drugs in Serum	5
UF - Drugs in Urine	6
SFD - Toxicological Analysis for Driver Fitness Determination	7
DHF - Drugs in Hair	9
DMS - Drug Screening in Hair	10
QSA - Qualitative Screening Analysis	11

Therapeutic Drugs

BZF - Benzodiazepine and Z-drugs in Serum	12
STM - Replacement Drugs in Serum and Urine	13
TCA - Tricyclic Antidepressants in Serum	14
TAB - Toxicological Analysis of Diagnostics of Brain Death	15
TDMA - Neuroleptics 1	16
TDMB - Anticonvulsants	17
TDMC - Neuroleptics 2	18
TDMD - Antidepressants	19

Alcohol

ETOH - Ethanol in Serum	20
AMF - Alcohol Consumption Markers in Serum	21
BCS - Congener Alcohols in Serum	22
ETG - Ethylglucuronide in Serum and Urine	23
EGH - Ethylglucuronide in Hair	24

Clinical Toxicology and Chemistry

ATU - Amanitine in Urine	25
HCY - Homocysteine in Serum	26

Pilot Proficiency Tests

DOAB - Drug Screening in Blood	28
ETB - Ethanol in Blood	29
GHB - GHB in Serum	30
IDS - Immunological Drug Screening in Urine	31

Miscellaneous

Annotations to the proficiency tests	33
Conditions of participation	35
Precision criteria	36
Registration form	38

CONTACT

Proficiency Testing Organisation

ARVECON GmbH
Kiefernweg 4
69190 Walldorf
Germany

Tel. + 49 6227 6909 170
Fax + 49 6227 6909 179
E-mail info@arvecon.de
Web www.arvecon.com



Certified acc. to
ISO 9001:2008

Coordinators

Dr. Georg Schmitt
Prof. Dr. Gisela Skopp
Institute of Legal Medicine and Traffic Medicine
University Hospital Heidelberg, Germany

E-mail georg.schmitt@med.uni-heidelberg.de
gisela.skopp@med.uni-heidelberg.de

GTFCh Office

PD Dr. Frank T. Peters
Institut für Rechtsmedizin
Universitätsklinikum Jena
Fürstengraben 23
07743 Jena, Germany

Tel. + 49 3641 9-35584
Fax: + 49 3641 9-37902
E-mail office@gtfch.org

Please send your application for membership of GTFCh to this address.

President der GTFCh

Prof. Dr. Stefan Tönnies
Institut für Rechtsmedizin
Kennedyallee 104
60596 Frankfurt am Main
Germany

Proficiency Testing Scheme

Dates

Prices

Details

BTMF - DRUGS IN SERUM

Dates

BTMF 1/17	BTMF 2/17	BTMF 3/17
31-Jan – 13-Mar	06-Jun – 17-Jul	03-Oct – 13-Nov

Prices

	Order no.	Price	GTFCh*
Price per proficiency test	11N00	295,--	210,--
Additional sample set	11N50	90,--	80,--
N = test 1 to 3			
Annual subscription 2017 (participation BTMF 1 to 3/17)	11500	730,--	520,--
Add. sample set for subscription (1 x per test)	11550	270,--	240,--

all prices in EUR, incl. standard shipping costs**, plus 19% VAT

* price for members of GTFCh ** see annotations p.35

Material

sample A: Lyophilized serum, 5 mL (2 x 2,5 mL)

sample B: different tasks, such as the determination of DOA in whole blood, in authentic serum samples or other current requirements. The sample volume is adapted to the respective requests.

In the proficiency test BTMF 2/17 whole blood is used as matrix for sample B.

Details

Analyte

Cannabinoids

Δ^9 -THC
11-nor- Δ^9 -Carboxy-THC
11-Hydroxy- Δ^9 -THC

Cocaine/-metabolite

Cocaine
Benzoylecgonine
Ecgonine methylester

Opiates

Morphine
MAM
Codeine
DHC

Amphetamines

Amphetamine
MDMA
MDE
MDA
Methamphetamine

The addition of further drugs from corresponding drug classes is possible. Their determination is optional.

Concentration ranges

Cannabinoids	0 - 250	Cocaine /-metabolites	0 - 750
Opiates	0 - 1000	Amphetamines	0 - 1000

All indications given as $\mu\text{g/L}$

Requests

Identification and quantitative determination of the analytes

UF - DRUGS IN URINE

Dates

UF 1/17	UF 2/17	UF 3/17
17-Jan – 20-Feb	09-May – 12-Jun	12-Sep – 16-Oct

Prices

	Order no.	Price
Price per proficiency test	12N00	110,--
Additional sample set	12N50	50,--
N = test 1 to 3		
Annual subscription 2017 (participation UF 1 to 3/17)	12500	280,--
Add. sample set for subscription (1 x per test)	12550	150,--

all prices in EUR, incl. standard shipping costs**, plus 19% VAT
** see annotations p.35

Material

2 samples, lyophilized urine, each 10 mL

Details

Analytes

5 to 8 DOA, drugs or their metabolites

Requests

Step 1: immunological tests incl. confirmation of positive results
Step 2: general unknown analysis

We recommend to perform the analyses with mass spectrometric methods.

SFD - TOXICOLOGICAL ANALYSIS FOR DRIVER FITNESS DETERMINATION

Dates

SFD 1/17	SFD 2/17	SFD 3/17
17-Jan – 20-Feb	09-May – 12-Jun	12-Sep – 16-Oct

Prices

	Order no.	Price
Price per proficiency test	15N00	75,--
Additional sample set	15N50	25,--
N = test 1 to 3		
Annual subscription 2017 (participation SFD 1 to 3/17)	15500	190,--
Add. sample set for subscription (1 x per test)	15550	75,--

all prices in EUR, incl. standard shipping costs**, plus 19% VAT

** see annotations p.35

Material

1 sample, lyophilized urine, 10 mL

Details

Analytes

The sample is prepared in accordance with the substance list of the assessment criteria for driver fitness determination including parent compounds, related substances (opioids, further active benzodiazepine substances, Z-drugs, amphetamines, and further amphetamine derivatives) including important products of metabolism.

Requests

Toxicological analysis for driver fitness determination

Participation possible by:

- 1) immunological analysis incl. quantitative confirmation analysis
- 2) quantitative mass-spectrometric analysis.

ACQ SCIENCE

YOUR PARTNER FOR QUALITY

TOXICOLOGY



TAILOR-MADE



FORENSIC



CLINICAL



ACQ SCIENCE

YOUR PARTNER FOR QUALITY

ACQ Science GmbH
Etzwiesenstraße 37
D-72108 Rottenburg-Hailfingen

Telefon: + 49(0)7457-94693 0
Telefax: + 49(0)7457-94693 69

e-Mail: info@acq-science.de
i-Net: www.acq-science.de

DHF - DRUGS IN HAIR

Dates

DHF 1/17	DHF 2/17	DHF 3/17
28-Feb – 03-Apr	13-Jun – 17-Jul	10-Oct – 13-Nov

Prices

	Order no.	Price
Price per proficiency test	13N00	160,-
Additional sample set	13N50	90,-
N = test 1 to 3		
Annual subscription 2017 (participation DHF 1 to 3/17)	13500	395,-
Add. sample set for subscription (1 x per test)	13550	270,-

all prices in EUR, incl. standard shipping costs**, plus 19% VAT

** see annotations p.35

Material

2 samples (A, B), each 250 mg powdered, human hair spiked with drugs
The results of both samples are certified.

Details

Analytes

Sample A

THC
THC-COOH
Morphine
MAM
Codeine
Amphetamine
MDMA
MDA
MDEA
Cocaine
Benzoyllecgonine
Cocaethylene

Sample B

Oxycodone
Tramadol
Tilidine
Fentanyl
Diazepam
Nordiazepam
Alprazolam
Bromazepam
Flunitrazepam
Oxazepam
Lorazepam
Ketamine

Methadone
EDDP
Buprenorphine

The addition of further analytes is possible, the determination is optional.

Requests

Quantitative determination of the analytes

DMS - DRUG SCREENING IN HAIR

Dates

DMS 1/17	DMS 2/17
18-Apr – 15-May	05-Sep – 02-Oct

Prices

	Order no.	Price
Price per proficiency test	16N00	175,-
Additional sample*	16N50	40,-
* limited availability (1 sample) N = test 1 or 2		
Annual subscription 2017 (participation DMS 1 and 2/17)	16500	300,-
Add. sample set for subscription (1 sample per test)	16550	80,-

all prices in EUR, incl. standard shipping costs**, plus 19% VAT

** see annotations p.35

Material

1 or 2 samples, each 200 mg cut or powdered, made of drug user hair

Details

Analytes

Different composition. The screening should include at least THC, morphine, MAM, amphetamine, MDMA, MDA, cocaine and benzoyllecgonine. The presence of other analytes is possible.

Requests

Quantitative determination of the analytes

QSA - QUALITATIVE SCREENING ANALYSIS

Dates

QSA 1/17	QSA 2/17	QSA 3/17
07-Feb – 06-Mar	30-May – 26-Jun	12-Sep – 09-Oct

Prices

	Order no.	Price	GTFCh*
Price per proficiency test	14N00	125,--	105,--
Additional sample set	14N50	55,--	50,--
	N = test 1 to 3		
Annual subscription 2017 (participation QSA 1 to 3/17)	14500	315,--	265,--
Add. sample set for subscription (1 x per test)	14550	165,--	150,--

all prices in EUR, incl. standard shipping costs**, plus 19% VAT

** see annotations p.35

Material

sample A: serum, liquid, 5 mL

sample B: urine, liquid, 10 mL

Details

Analytes

One or more drugs, with toxicological case history

Requests

Identification of the drugs and interpretation of the results

BZF - BENZODIAZEPINES AND Z-DRUGS IN SERUM

Dates

BZF 1/17	BZF 2/17	BZF 3/17
10-Jan – 06-Feb	25-Apr – 22-May	29-Aug – 25-Sep

Prices

	Order no.	Price	GTFCh*
Price per proficiency test	21N00	130,--	105,--
Additional sample set	21N50	70,--	55,--
N = test 1 to 3			
Annual subscription 2017 (participation BZF 1 to 3/17)	21500	330,--	265,--
Add. sample set for subscription (1 x per test)	21550	210,--	165,--

all prices in EUR, incl. standard shipping costs**, plus 19% VAT

*price for GTFCh members ** see annotations p.35

Material

2 samples (A+B), lyophilized serum, each 3 mL

Details

Analytes and concentration ranges

Sample A		Sample B	
Diazepam	200 - 2000	Flunitrazepam	10 - 25
Nordiazepam	200 - 1500	Norflunitrazepam	10 - 50
Bromazepam	50 - 250	7-Aminoflunitrazepam	10 - 70
Clonazepam	5 - 100	Oxazepam	250 - 1000
Temazepam	20 - 1000	Midazolam	50 - 250
Alprazolam	5 - 100	Lorazepam	20 - 300
Zolpidem	50 - 250	Lormetazepam	1 - 25
Nitrazepam	20 - 200	Zopiclone	10 - 100
		ACP	10 - 100

all concentrations given as µg/L

Requests

Quantitative determination of the analytes

STM - REPLACEMENT DRUGS IN SERUM AND URINE

Dates

STM 1/17	STM 2/17	STM 3/17
17-Jan – 13-Feb	02-May – 29-May	05-Sep – 02-Oct

Prices

	Order no.	Price	GTFCh*
Price per proficiency test	22N00	95,-	80,-
Additional sample set	22N50	60,-	45,-
N = test 1 to 3			
Annual subscription 2017 (participation STM 1 to 3/17)	22500	225,-	200,-
Add. sample set for subscription (1 x per test)	22550	120,-	135,-

all prices in EUR, incl. standard shipping costs**, plus 19% VAT

*price for GTFCh members ** see annotations p.35

Material

Sample A: lyophilized serum, 2,5 mL

Sample B: lyophilized urine, 2,5 mL

Details

Analytes

buprenorphine, methadone, norbuprenorphine, EDDP

Concentration ranges

Analyte	Serum	Urine
buprenorphine	1 - 20	0.5 - 100
norbuprenorphine	2 - 40	0.5 - 150
methadone	10 - 800	10 - 1000
EDDP	10 - 800	10 - 1000

all concentrations given as µg/L

Requests

Quantitative determination of the analytes

TCA - TRICYCLIC ANTIDEPRESSANTS IN SERUM

Dates

TCA 1/17	TCA 2/17	TCA 3/17	TCA 4/17
24-Jan – 20-Feb	25-Apr – 22-May	11-Jul – 07-Aug	17-Oct – 13-Nov

Prices

	Order no.	Price	GTFCh*
Price per proficiency test	23N00	110,--	95,--
Additional sample set	23N50	70,--	60,--
N = test 1 to 4			
Annual subscription 2017 (participation TCA 1 to 4/17)	23500	390,--	335,--
Add. sample set for subscription (1 x per test)	23550	245,--	210,--

all prices in EUR, incl. standard shipping costs**, plus 19% VAT

*price for GTFCh members ** see annotations p.35

Material

4 samples (A, B, C, D), lyophilized serum, each 2,5 mL

Details

Analytes and concentration ranges

samples A / B

doxepine
nordoxepine
amitriptyline
nortriptyline
trimipramine
opipramol

samples C / D

imipramine
desipramine
clomipramine
norclomipramine
maprotiline
desmethylmaprotiline

all analytes 10 - 1500 µg/L

Requests

Quantitative determination of the analytes

TAB - TOXICOLOGICAL ANALYSIS OF DIAGNOSTICS OF BRAIN DEATH

Dates

TAB 1/17	TAB 2/17
14-Feb – 06-Mar	29-Aug – 18-Sep

Prices

	Order no.	Price
Price per proficiency test	24N00	105,--
Additional sample set	24N50	35,--
N = test 1 to 2		
Annual subscription 2017 (participation TAB 1 and 2/17)	24500	200,--
Add. sample set for subscription (1 x per test)	24550	70,--

all prices in EUR, incl. standard shipping costs**, plus 19% VAT

** see annotations p.35

Material

2 samples, lyophilized serum, each 2,5 mL

Details

Analytes and concentration ranges

thiopental	0,5 - 3
pentobarbital	0,5 - 5
phenobarbital	2,0 - 50
methohexital	0,25 - 3
all concentrations given as mg/L	

midazolam	20 - 500
diazepam	100 - 500
nordiazepam	100 - 500
fentanyl	1 - 10
sufentanil	0,01 - 0,25
all concentrations given as µg/L	

Requests

Quantitative determination of the analytes

TDMA - NEUROLEPTICS 1

Dates

TDMA 1/17	TDMA 2/17	TDMA 3/17
07-Feb – 13-Mar	23-May – 19-Jun	19-Sep – 16-Oct

Prices

	Order no.	Price	GTFCh*
Price per proficiency test	25N00	130,--	115,--
Additional sample set	25N50	75,--	65,--
N = test 1 to 3			
Annual subscription 2017 (participation TDMA 1 to 3/17)	25500	325,--	290,--
Add. sample set for subscription (1 x per test)	25550	225,--	195,--

all prices in EUR, incl. standard shipping costs**, plus 19% VAT

*price for GTFCh members ** see annotations p.35

Material

4 samples (A, B, C, D), lyophilized serum, each 4,0 mL

Details

Analytes and concentration ranges

samples A/B

clozapine	100 - 1500
N-desmethylozapine	100 - 1500
olanzapine	10 - 100
quetiapine	25 - 600
amisulpride	50 - 500
thioridazine	50 - 300
chlorprothixene	10 - 400

samples C/D

risperidone	1 - 15
paliperidone*	5 - 150
perazine	25 - 600
ziprasidone	10 - 150
levomepromazine	15 - 250
promethazine	50 - 500

all concentrations given as µg/L

* 9-hydroxyrisperidone

Requests

Quantitative determination of the analytes

TDMB - ANTICONVULSANTS

Dates

TDMB 1/17	TDMB 2/17	TDMB 3/17
21-Feb – 20-Mar	06-Jun – 03-Jul	03-Oct – 30-Oct

Prices

	Order no.	Price	GTFCh*
Price per proficiency test	26N00	125,--	110,--
Additional sample set	26N50	65,--	55,--
N = test 1 to 3			
Annual subscription 2017 (participation TDMB 1 to 3/17)	26500	315,--	280,--
Add. sample set for subscription (1 x per test)	26550	195,--	165,--

all prices in EUR, incl. standard shipping costs**, plus 19% VAT

*price for GTFCh members

** see annotations p.35

Material

2 samples (A, B), lyophilized serum, 4,0 mL

Details

Analytes and concentration ranges

carbamazepine	1 - 15
10-OH-carbamazepine	5 - 50
oxcarbazepine	5 - 50
felbamate	15 - 100
pregabalin	0,5 - 10
gabapentin	1 - 30
tiagabine	0,01 - 0,25
levetiracetam	5 - 50
topiramate	1 - 15
vigabatrin	1 - 20
lamotrigine	2 - 20
lacosamide	1 - 20
rufinamide	2 - 40
zonisamide	5 - 60

all concentrations given as mg/L

Requests

Quantitative determination of the analytes

TDMC - NEUROLEPTICS 2

Dates

TDMC 1/17	TDMC 2/17	TDMC 3/17
07-Mar – 03-Apr	20-Jun – 17-Jul	17-Oct – 13-Nov

Prices

	Order no.	Price	GTFCh*
Price per proficiency test	27N00	125,--	110,--
Additional sample set	27N50	65,--	55,--
N = test 1 to 3			
Annual subscription 2017 (participation TDMC 1 to 3/17)	27500	315,--	280,--
Add. sample set for subscription (1 x per test)	27550	195,--	165,--

all prices in EUR, incl. standard shipping costs**, plus 19% VAT

*price for GTFCh members ** see annotations p.35

Material

2 samples (A, B), lyophilized serum, 4,0 mL

Details

Analytes and concentration ranges

aripiprazol	50 - 500
dehydroaripiprazol	50 - 500
flupenthixol	1,0 - 25
fluphenazine	0,5 - 15
haloperidol	1,0 - 25
sertindol	25 - 150
sulpiride	100 - 1000
melperone	20 - 150
pipamperone	50 - 500

all concentrations given as µg/L

Requests

Quantitative determination of the analytes

TDMD - ANTIDEPRESSIVA

Dates

TDMD 1/17	TDMD 2/17	TDMD 3/17
21-Mar – 17-Apr	04-Jul – 31-Jul	31-Oct – 27-Nov

Prices

	Order no.	Price	GTFCh*
Price per proficiency test	28N00	125,-	110,-
Additional sample set	28N50	65,-	55,-
N = test 1 to 3			
Annual subscription 2017 (participation TDMD 1 to 3/17)	28500	315,-	280,-
Add. sample set for subscription (1 x per test)	28550	195,-	165,-

all prices in EUR, incl. standard shipping costs**, plus 19% VAT

*price for GTFCh members ** see annotations p.35

Material

2 samples (A, B), lyophilized serum, each 4,0 mL

Details

Analytes and concentration ranges

duloxetine	10 - 150	paroxetine	10 - 150
fluoxetine	25 - 500	reboxetine	25 - 350
norfluoxetine	25 - 500	sertralien	10 - 250
fluvoxamine	25 - 250	venlafaxine	25 - 400
mianserine	10 - 150	desmethylvenlafaxine	25 - 400
mirtazapine	25 - 150	citalopram	25 - 150

all concentrations given as µg/L

Requests

Quantitative determination of the analytes

ETOH - ETHANOL IN SERUM

Dates

ETOH 1/17	ETOH 2/17	ETOH 3/17	ETOH 4/17
10-Jan – 30-Jan	11-Apr – 02-May	04-Jul – 24-Jul	03-Oct – 23-Oct

Prices

	Order no.	Price	GTFCh*
Price per proficiency test	31N00	75,--	65,--
Additional sample set	31N50	50,--	35,--
N = test 1 to 4			
Annual subscription 2017 (participation ETOH 1 to 4/17)	31500	270,--	230,--
Add. sample set for subscription (1 x per test)	31550	200,--	140,--

all prices in EUR, incl. standard shipping costs**, plus 19% VAT

*price for GTFCh members ** see annotations p.35

Material

2 samples (A, B), liquid serum, each 2,5 mL

Details

Analytes

Ethanol

Requests

Quantitative determination with the GC and the ADH method according to the guidelines of the Federal Health Authority BfA or its current adaptation made by the German Forensic Society (DGRM), the German Society for Traffic Medicine (DGVM) and the Society for Toxicological and Forensic Chemistry (GTFCh).

As a permissible variation from a target concentration <1,000 g/kg of whole blood or 1,236 g/l of serum a maximum of $\pm 0,05$ g/kg (0,062 g/l) is valid, of a target concentration >1,000 g/kg of whole blood or 1,236 g/l of serum a maximum of $\pm 5\%$.

AMF - ALCOHOL CONSUMPTION MARKERS IN SERUM

Dates	AMF 1/17	AMF 2/17	AMF 3/17	AMF 4/17
	31-Jan – 27-Feb	09-May – 05-Jun	22-Aug – 18-Sep	14-Nov – 11-Dec

Prices	Order no.	Price
Price per proficiency test	32N00	75,-
Additional sample set	32N50	40,-
	N = test 1 to 4	
Annual subscription 2017 (participation AMF 1 to 4/17)	32500	275,-
Add. sample set for subscription (1 x per test)	32550	160,-

all prices in EUR, incl. standard shipping costs**, plus 19% VAT
** see annotations p.35

Material 2 samples (A, B), lyophilized serum, each 1,0 mL

Details **Analytes**
CDT

Requests
Quantitative determination of CDT and interpretation of the results

BGS - CONGENER ALCOHOLS IN SERUM

Dates

BGS 1/17	BGS 2/17
14-Mar – 10-Apr	05-Sep – 02-Oct

Prices

	Order no.	Price
Price per proficiency test	33N00	140,--
Additional sample	33N50	65,--
N = test 1 to 2		
Annual subscription 2017 (participation BGS 1 and 2/17)	33500	235,--
Add. sample for subscription (1 x per test)	33550	130,--

all prices in EUR, incl. standard shipping costs**, plus 19% VAT

** see annotations p.35

Material

1 sample, liquid serum, 2,5 mL

Details

Analytes

Methanol
Propan-1-ol
Propan-2-ol
2-Methylpropan-1-ol
Butan-2-ol
Butan-2-one
Butan-1-ol
2- u. 3-Methylbutan-1-ol

Requests

Quantitative determination of the analytes

ETG - ETHYLGLUCURONIDE IN SERUM UND URINE

Dates

ETG 1/17	ETG 2/17	ETG 3/17
07-Mar – 03-Apr	27-Jun – 24-Jul	24-Oct – 20-Nov

Prices

	Order no.	Price
Price per proficiency test	34N00	110,-
Additional sample set	34N50	45,-
N = test 1 to 3		
Annual subscription 2017 (participation ETG 1 to 3/17)	34500	280,-
Add. sample set for subscription (1 x per test)	34550	135,-

all prices in EUR, incl. standard shipping costs**, plus 19% VAT

** see annotations p.35

Material

Sample A: lyophilized serum, 2,5 mL

Sample B: lyophilized urine, 2,5 mL

Details

Analyte

Ethylglucuronide, Ethylsulfate

Concentration ranges, mg/L

sample A: serum: 0.5 - 5

sample B: urine: 1.0 - 10

Requests

Quantitative determination of the analytes

EGH - ETHYLGLUCURONIDE IN HAIR

Dates

EGH 1/17	EGH 2/17	EGH 3/17
28-Feb – 27-Mar	13-Jun – 10-Jul	10-Oct – 06-Nov

Prices

	Order no.	Price
Price per proficiency test	35N00	110,-
Additional sample set*	35N50	50,-
* limited availability (1 sample set)		N = test 1 to 3
Annual subscription 2017 (participation EGH 1 to 3/17)	35500	275,-
Add. sample set for subscription (1 x per test)	35550	150,-

all prices in EUR, incl. standard shipping costs**, plus 19% VAT

** see annotations p.35

Material

2 samples (A, B): each 100 mg powdered or cut, authentic human hair

Details

Analytes

Ethylglucuronide

Requests

Quantitative determination of the analyte

ATU - AMANITINE IN URINE

Dates

ATU 1/17	ATU 2/17
22-Aug – 11-Sep	24-Oct – 13-Nov

Prices

	Order no.	Price
Price per proficiency test	41N00	95,--
Additional sample set	41N50	35,--
N = test 1 to 2		
Annual subscription 2017 (participation ATU 1 and 2/17)	41500	150,--
Add. sample set for subscription (1 x per test)	41550	70,--

all prices in EUR, incl. standard shipping costs**, plus 19% VAT

** see annotations p.35

Material

2 samples (A, B), lyophilized urine, 1,2 mL

Details

Analyte

Amanitine

Requests

Quantitative determination of the analytes, interpretation of the results

HCY - HOMOCYSTEINE IN SERUM

Dates

HCY 1/17	HCY 2/17	HCY 3/17	HCY 4/17
31-Jan – 20-Feb	09-May – 29-May	22-Aug – 11-Sep	07-Nov – 27-Nov

Prices

	Order no.	Price
Price per test	42N00	65,--
Additional sample set	42N50	30,--
N = test 1 to 4		
Annual subscription 2017 (participation HCY 1 to 4/17)	42500	225,--
Add. sample set for subscription (1 x per test)	42550	120,--

all prices in EUR, incl. standard shipping costs**, plus 19% VAT

** see annotations p.35

Material

2 samples (A, B), lyophilized serum, 2,5 mL

Details

Analytes

homocysteine

Concentration range

homocysteine 1 - 50 $\mu\text{mol/L}$ \triangleq 0,1 – 7 mg/L

Request

Quantitative determination of homocysteine

Pilot proficiency tests and proficiency tests of Arvecon

Pilot proficiency tests are performed to prepare new official proficiency tests. In these tests, the suitability of the composition of the sample material as well as the quantity of the sample are tested and optimized. The quality and amount of the incoming results are assessed and included in the preparation of an appropriate results report. Based on these findings, it may also be necessary to adapt the design of the tests during the course of the year.

DOAB - DRUG SCREENING IN BLOOD

Dates

DOAB 1/17	DOAB 2/17	DOAB 3/17	DOAB 4/17
14-Feb – 13-Mar	16-May – 12-Jun	15-Aug – 11-Sep	14-Nov – 11-Dec

Prices

	Order no.	Price
Price per proficiency test	52N00	175,-
Additional sample set	52N50	45,-
N = test 1 to 4		
Annual subscription 2017 (participation DOAB 1 to 4/17)	52500	615,-
Add. sample set for subscription (1 x per test)	52550	160,-

all prices in EUR, incl. standard shipping costs**, plus 19% VAT

** see annotations p.35

Material

2 samples A and B, lyophilized whole blood, each 2,5 mL
Each sample contains 0 to 10 analytes.

Details

Analytes

Aim of the proficiency test is the determination of blood samples for the listed drugs and the quantitative determination of the detected drugs.

Table of analytes

Δ^9 -THC	Amphetamine
11-nor- Δ^9 -Carboxy-THC	MDMA
11-Hydroxy- Δ^9 -THC	MDE
Morphine	MDA
MAM	Methamphetamine
Codeine	Ketamine
DHC	Norketamine
Cocaine	Buprenorphine
Benzoylcegonine	Norbuprenorphine
Ecgoninmethylester	Methadone
Cocaethylene	EDDP

Requests

Identification and quantitative determination of the detected drugs.

ETB - ETHANOL IN BLOOD

Dates

ETB 1/17	ETB 2/17	ETB 3/17	ETB 4/17
24-Jan – 13-Feb	25-Apr – 15-May	18-Jul – 07-Aug	17-Oct – 06-Nov

Prices

	Order no.	Price
Price per proficiency test	53N00	75,--
Additional sample set	53N50	50,--
N = test 1 to 4		
Annual subscription 2017 (participation ETB 1 to 4/17)	53500	270,--
Add. sample set for subscription (1 x per test)	53550	200,--

all prices in EUR, incl. standard shipping costs**, plus 19% VAT

** see annotations p.35

Material

2 samples (A+B), liquid whole blood, each 2,5 mL

Details

Analyte

Ethanol

Requests

Quantitative determination with GC- and/or ADH method

Accepted deviation from the target value:

1.) $\leq 1,0 \text{ g/kg} \pm 0,05 \text{ g/kg}$

2.) $> 1,0 \text{ g/kg} \pm 5\%$.

GHB - GHB IN SERUM

Dates

GHB 1/17	GHB 2/17
18-Apr – 08-May	10-Oct – 30-Oct

Prices

	Order no.	Price
Price per proficiency test	54N00	40,-
Additional sample set	54N50	20,-
N = test 1 or 2		
Annual subscription 2017 (participation GHB 1 or 2/17)	54500	75,-
Add. samples for subscription (1 sample per test)	54550	40,-

all prices in EUR, incl. standard shipping costs**, plus 19% VAT

** see annotations p.35

Material

2 samples, each 2 mL lyophilized serum

Details

Analyte

GHB (γ -Hydroxybutyric acid)

Requests

Identification and quantitative determination of the analytes

IDS - IMMUNOLOGICAL DRUG SCREENING IN URINE

Dates

IDS 1/17	IDS 2/17	IDS 3/17	IDS 4/17
31-Jan – 27-Feb	09-May – 05-Jun	22-Aug – 18-Sep	07-Nov – 04-Dec

Prices

	Order no.	Price
Price per proficiency test	51N00	75,-
Additional sample set	51N50	25,-
N = test 1 to 3		
Annual subscription 2017 (participation IDS 1 to 4/17)	51500	260,-
Add. sample set for subscription (1 x per test)	51550	90,-

all prices in EUR, incl. standard shipping costs**, plus 19% VAT

** see annotations p.35

Material

Lyophilized urine, 3 mL

Details

Analytes

Aim of the proficiency test is the determination of urine samples with immunological methods for the listed drug classes and analytes. Qualitative and if possible qualitative results should be reported as well as the applied cut off value.

Preliminary table

Drug classes

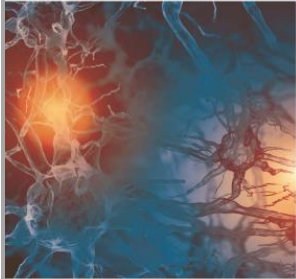
- | | |
|--------------------------|------------------------------|
| - Amphetamines | - Barbiturates |
| - Methamphetamines | - Synthetic cannabinoids |
| - Benzodiazepines | - Tricyclic antidepressants |
| - Cannabinoids | - Buprenorphine/-metabolites |
| - Cocaine & -metabolites | - Nicotine/-metabolites |
| - Opiates | - LSD/-metabolites |
| - Methadone/-metabolites | |

Analytes

- | | |
|-----------------------------|-----------------------|
| - Methadone | - Ketamine |
| - EDDP | - Meperidine |
| - MDMA (Ecstasy) | - Oxycodone |
| - 6-Monoacetylmorphine | - Phencyclidine (PCP) |
| - Carisoprodol (Mebroamate) | - Pregabalin |
| - Ethylglucuronide | - Tapentadol |
| - Fentanyl | - Tramadol |
| - Gabapentine | - Zolpidem |

Requests

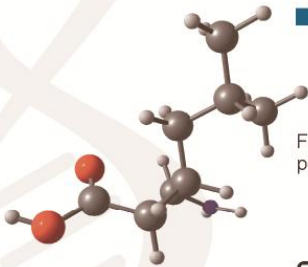
Qualitative determination of the analytes



ARK™ Pregabalin Urine Assay

The first homogeneous enzyme immunoassay for the detection of pregabalin abuse in urine

- Simple and rapid screening method for pregabalin
- Highly specific, even in low concentrations
- No time-consuming sample preparation and extraction required
- Liquid, stable, ready-to-use reagents, calibrators and controls
- Application protocols for all major clinical chemistry analyzers



For more information on the new Pregabalin assay, please do not hesitate to contact us at:

Specialty  Diagnostix

Specialty Diagnostix GmbH

Sailerwöhr 16, 94032 Passau, Germany

Phone +49 (0)851 988 4930 0, Fax +49 (0)851 988 4930 8

info@specialtydiagnostix.de, www.specialtydiagnostix.de

1. PERIODS FOR REGISTRATION

To guarantee an undelayed run of the proficiency tests and of the compilation of the reports of results it is necessary that the results are submitted to ARVECON up to the indicated deadline. This is also valid for the results submitted by post. Therefore, we kindly ask you to submit your post in time or to inform us beforehand per fax or internet about your results. We recommend to transmit the results by entering them in the formula on our homepage, because only then you will receive an additional acknowledgement of receipt via e-mail.

2. RESULT FORMS

All result forms and reports are available in German and English. The participants coming from a non-German speaking country automatically receive the English version of all forms. Change requests have to be indicated on the registration form or communicated separately to ARVECON

3. COMMUNICATION OF RESULTS

All handwritten entries have to be made carefully and legible. Errors which are caused by a bad legibility of the entries cannot be corrected subsequently.

4. RECLAMATIONS

If you should detect errors in the analysis or the certificate after having received the results of the proficiency tests, we kindly ask you to immediately inform ARVECON. If the error has been caused by yourself by a wrong transmission of the data, according to the decision of the board of the GTFCh, no subsequent error correction is possible, even when submitting the analysis documents.

5. CORRESPONDENCE

All written requests (e-mail, post) to ARVECON can be made in German, English or French. Unfortunately, requests made in other languages cannot be dealt with.

ANNOTATIONS TO THE PROFICIENCY TESTS

1. PERIODS OF ANALYSIS

At the moment, the period of analysis of the proficiency tests comes to approx. 4 weeks.

2. SAMPLES OF PROFICIENCY TESTS

The management and the organizers of the proficiency tests may change the ingredients and the volume of the samples used for proficiency tests if this proves to be favourable and/or necessary.

3. PRICES

All prices indicated for the proficiency tests are net prices plus VAT. The prices include packaging and standard dispatch.

4. DISPATCH OF THE SAMPLES (EUROPE)

Normally, the samples are dispatched five days before starting the proficiency test. For the dispatch of the samples, delivery periods of up to eight days are included into the processing time of the respective proficiency test. If the samples arrive later, the organizer of the proficiency test has to be contacted to agree upon an extension of the period for registration.

5. DISPATCH OF THE SAMPLES (OUTSIDE EUROPE)

Shipment outside Europe is performed by express service. The costs will be charged separately.

Fee per shipment:	North America	EUR 30,-
	Asia, Africa	EUR 40,-

6. TYPES OF PAYMENT

After billing, payment by transfer or credit card (Mastercard, Visa) is possible. The credit card data may be transmitted in writing, by e-mail or via our homepage.

CONDITIONS OF PARTICIPATION

1. All laboratories working in the field of forensic or clinical toxicology or related fields may participate.
2. If not stated otherwise in the requests regarding the proficiency test no special methods for analysis are prescribed.
3. Enrolment for participation is possible up to the beginning of the proficiency test. Later enrolments are only possible on request.
4. Enrolment may be by subscription or for an individual test.
5. The results of the proficiency tests may be submitted by post, fax, e-mail or per internet.
6. The results have to be submitted up to the scheduled delivery date. If the results arrive late, the participant receives a report of results without his own results.
7. The analyses correspond to acknowledged scientific criteria which are supervised by accompanying working groups and/or expert groups.
8. The participants receive their reports of results by post. In case of an incorrect analysis the participants in question are entitled to receive a corrected report. Further claims do not exist.
9. Incorrect entries in the result forms may be corrected only up to the deadline of the respective proficiency test. Subsequent corrections are not possible.
10. If a proficiency test cannot take place, already paid participation fees will be refunded.

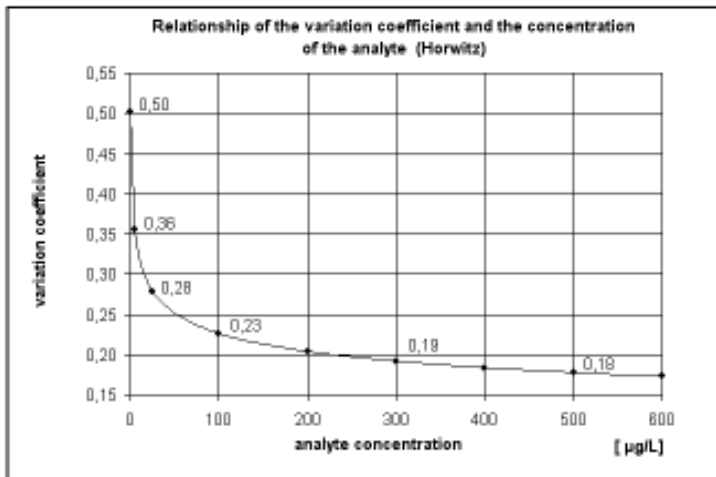
PRECISION CRITERIA

By means of the GTFCh proficiency tests for the quantitative determination of single analytes it is possible to analyse and represent the accuracy of measurement actually to be reached according to the respective state of analysis technology in an interlaboratory comparison. Besides, the proficiency tests offer the laboratories both support and clues regarding the improvement and control as well as a forum to represent the own analytical performance.

In 1982, Horwitz [1] found out by means of 150 proficiency tests carried out independently of each other that the coefficient of variation is to be represented on average as a function of concentration:

$$VC = 2^{(1-0.5 \log C)}$$

VC = variation coefficient (%), C = concentration of the analytes as kg/L!



The standard deviation between the preferred concentration range.

Analogous to the formula, the coefficient of variation is doubling if the concentration of the analyte drops by the factor 100 (see also figure above). These now more than 30 years old data have been determined in different ranges of concentration with various analytes and five different analysis techniques, namely chromatography, AAS, spectrometry, polarography, and bioassays. As regards the 'Horwitz function' it is indicated that it is independent of samples, analytes, and methods. However, because of improvements made in the analysis technique and considering the current results of proficiency tests, there are justifiable doubts regarding its general validity. Both the detection limit and the limit of determination of a measuring method are not considered in the Horwitz function. Today, in

the course of the indispensable validation of analysis techniques and with the help of user-friendly EDP programmes, these limits may also be deDatesd at every new calibration during the laboratory routines. It is not rare that measured values being between the limit of determination and the detection limit are communicated, though in this range the quantitative determination should not be indicated any more because of the increasing measurement uncertainty to be determined statistically. Nevertheless, the coefficients of variation deduced from the equation proved to be a suitable standard to assess the efficiency at single analysis techniques or in the interlaboratory comparison. Another possibility to evaluate the results of proficiency tests is to analyse the submitted data according to ISO 5725 [2]. The standard deviation of reproducibility to be calculated according to ISO 5725 is only depending on the efficiency of the participants in the proficiency test. In case of stronger diverging data pools this leads to an extension of the evaluation limits compared with the Horwitz method [3]. To calculate the evaluation limits, the method according to ISO 5725 requires, however, a multiple determination (at least two independent measured values) of the analyte.

Literature:

HORWITZ W (1982)

Evaluation of analytical methods used for regulation of foods and drugs. Anal Chem 54 (1): 67A -76A

DIN ISO 5725 (1994)

International Organization for Standardization. Genauigkeit (Richtigkeit und Präzision) von Messverfahren und Messergebnissen. ISO Central Secretariat, 1, rue de Varamba, CH 1211 Genf 20, Schweiz

Herbold M, Schmitt G, Aderjan R (2003)

Auswertung forensischer Ringversuche nach ISO 5725, Beispiel: Haare - Ringversuche 2002. In: Symposium der GTFCh, Mosbach/Baden, Hrsg.: F. Pragst, R. Aderjan, Dr. Dieter Helm Verlag, Heppenheim

Proficiency Testing Scheme 2017

Registration Form

Fax + 49 6227 6909 178 or + 49 6227 6909 179

Lab code:
(as available)

GTFCh member

this order is in addition to the existing continuous subscriptions

Delivery address also billing address

Billing address

Name _____
Institution _____

Street _____
ZIP / City _____
Country _____

Name _____
Institution _____

Street _____
ZIP / City _____
Country _____

Instructions for completing the form on the back

Proficiency Test	Continuous subscription ¹		Annual Subscription		Single participation				
	PT no. (see annot.)	Subscrip. 2017	Additional samples	Number per test	Proficiency Test	Additional samples			
					1/17	2/17	3/17	4/17	Number per test
DRUGS OF ABUSE									
BTMF	11-0	<input type="checkbox"/>	<input type="checkbox"/>	<input type="text"/> set (A,B)	<input type="checkbox"/>	<input type="checkbox"/>	<input type="checkbox"/>		<input type="text"/> set (A,B,C,D)
UF	12-0	<input type="checkbox"/>	<input type="checkbox"/>	<input type="text"/> sample/s	<input type="checkbox"/>	<input type="checkbox"/>	<input type="checkbox"/>		<input type="text"/> sample/s
DHF	13-0	<input type="checkbox"/>	<input type="checkbox"/>	<input type="text"/> set (A,B)	<input type="checkbox"/>	<input type="checkbox"/>	<input type="checkbox"/>		<input type="text"/> set (A,B)
QSA	14-0	<input type="checkbox"/>	<input type="checkbox"/>	<input type="text"/> set (A,B)	<input type="checkbox"/>	<input type="checkbox"/>	<input type="checkbox"/>		<input type="text"/> set (A,B)
SFD	15-0	<input type="checkbox"/>	<input type="checkbox"/>	<input type="text"/> sample/s	<input type="checkbox"/>	<input type="checkbox"/>	<input type="checkbox"/>		<input type="text"/> sample/s
DMS	16-0	<input type="checkbox"/>	<input type="checkbox"/>	<input type="text"/> sample/s	<input type="checkbox"/>	<input type="checkbox"/>			<input type="text"/> sample/s
DRUGS									
BZF	21-0	<input type="checkbox"/>	<input type="checkbox"/>	<input type="text"/> set (A,B)	<input type="checkbox"/>	<input type="checkbox"/>	<input type="checkbox"/>		<input type="text"/> set (A,B)
STM	22-0	<input type="checkbox"/>	<input type="checkbox"/>	<input type="text"/> set (A,B)	<input type="checkbox"/>	<input type="checkbox"/>	<input type="checkbox"/>		<input type="text"/> set (A,B)
TCA	23-0	<input type="checkbox"/>	<input type="checkbox"/>	<input type="text"/> set (A,B,C,D)	<input type="checkbox"/>	<input type="checkbox"/>	<input type="checkbox"/>	<input type="checkbox"/>	<input type="text"/> set (A,B,C,D)
TAB	24-0	<input type="checkbox"/>	<input type="checkbox"/>	<input type="text"/> sample/s	<input type="checkbox"/>	<input type="checkbox"/>	<input type="checkbox"/>		<input type="text"/> sample/s
TDMA	25-0	<input type="checkbox"/>	<input type="checkbox"/>	<input type="text"/> set (A,B,C,D)	<input type="checkbox"/>	<input type="checkbox"/>	<input type="checkbox"/>		<input type="text"/> set (A,B,C,D)
TDMA	25-0	<input type="checkbox"/>	<input type="checkbox"/>	<input type="text"/> set (A,B,C,D)	<input type="checkbox"/>	<input type="checkbox"/>	<input type="checkbox"/>		<input type="text"/> set (A,B,C,D)
TDMB	26-0	<input type="checkbox"/>	<input type="checkbox"/>	<input type="text"/> set (A,B)	<input type="checkbox"/>	<input type="checkbox"/>	<input type="checkbox"/>		<input type="text"/> set (A,B)
TDMC	27-0	<input type="checkbox"/>	<input type="checkbox"/>	<input type="text"/> set (A,B)	<input type="checkbox"/>	<input type="checkbox"/>	<input type="checkbox"/>		<input type="text"/> set (A,B)
TDMD	28-0	<input type="checkbox"/>	<input type="checkbox"/>	<input type="text"/> set (A,B)	<input type="checkbox"/>	<input type="checkbox"/>	<input type="checkbox"/>		<input type="text"/> set (A,B)
ETHANOL									
ETOH	31-0	<input type="checkbox"/>	<input type="checkbox"/>	<input type="text"/> set (A,B)	<input type="checkbox"/>	<input type="checkbox"/>	<input type="checkbox"/>	<input type="checkbox"/>	<input type="text"/> set (A,B)
AMF	32-0	<input type="checkbox"/>	<input type="checkbox"/>	<input type="text"/> set (A,B)	<input type="checkbox"/>	<input type="checkbox"/>	<input type="checkbox"/>	<input type="checkbox"/>	<input type="text"/> set (A,B)
BGS	33-0	<input type="checkbox"/>	<input type="checkbox"/>	<input type="text"/> sample/s	<input type="checkbox"/>	<input type="checkbox"/>			<input type="text"/> sample/s
ETG	34-0	<input type="checkbox"/>	<input type="checkbox"/>	<input type="text"/> set (A,B)	<input type="checkbox"/>	<input type="checkbox"/>	<input type="checkbox"/>		<input type="text"/> set (A,B)
EGH	35-0	<input type="checkbox"/>	<input type="checkbox"/>	<input type="text"/> set (A,B)	<input type="checkbox"/>	<input type="checkbox"/>	<input type="checkbox"/>		<input type="text"/> set (A,B)
CLINICAL TOXICOLOGY									
ATU	41-0	<input type="checkbox"/>	<input type="checkbox"/>	<input type="text"/> set (A,B)	<input type="checkbox"/>	<input type="checkbox"/>			<input type="text"/> set (A,B)
HCY	42-0	<input type="checkbox"/>	<input type="checkbox"/>	<input type="text"/> set (A,B)	<input type="checkbox"/>	<input type="checkbox"/>	<input type="checkbox"/>	<input type="checkbox"/>	<input type="text"/> set (A,B)
PILOT PROFICIENCY TEST									
IDS	51-0	<input type="checkbox"/>	<input type="checkbox"/>	<input type="text"/> sample/s	<input type="checkbox"/>	<input type="checkbox"/>	<input type="checkbox"/>	<input type="checkbox"/>	<input type="text"/> sample/s
DOAB	52-0	<input type="checkbox"/>	<input type="checkbox"/>	<input type="text"/> set (A,B)	<input type="checkbox"/>	<input type="checkbox"/>	<input type="checkbox"/>	<input type="checkbox"/>	<input type="text"/> set (A,B)
ETB	53-0	<input type="checkbox"/>	<input type="checkbox"/>	<input type="text"/> set (A,B)	<input type="checkbox"/>	<input type="checkbox"/>	<input type="checkbox"/>	<input type="checkbox"/>	<input type="text"/> set (A,B)
GHB	54-0	<input type="checkbox"/>	<input type="checkbox"/>	<input type="text"/> set (A,B)	<input type="checkbox"/>	<input type="checkbox"/>			<input type="text"/> set (A,B)

Please send the result reports and certificates by:

post e-mail (please indicate up to 3 e-mail addresses on the address form)

Please select only one option!

Date, signature

ARVECON GmbH
 Kleinfeldweg 52
 69190 Walldorf
 Germany

Instructions for completing the form

Please mark here if you want to register for a continuous participation.

Please mark here if you want to participate in all test of the year.

Please enter here the number of additional samples, if you need additional sample material.

Please mark here if you want to participate only in particular tests.

Proficiency Test	PT no. (see annot.)	Continuous subscription ¹	Annual Subscription		Particular participation				Additional samples	
			Additional samples	Number per test	1/17	2/17	3/17	4/17		Number per test
DRUGS OF ABUSE										
BTMF	11-0	<input checked="" type="checkbox"/>	<input checked="" type="checkbox"/>	<input type="text" value="1"/>	set (A,B)	<input type="checkbox"/>	<input type="checkbox"/>	<input type="checkbox"/>	<input type="checkbox"/>	set (A,B,C,D)
UF	12-0	<input type="checkbox"/>	<input type="checkbox"/>	<input type="text" value=""/>	sample/s	<input checked="" type="checkbox"/>	<input type="checkbox"/>	<input checked="" type="checkbox"/>	<input type="checkbox"/>	2 sample/s
DHF	13-0	<input type="checkbox"/>	<input type="checkbox"/>	<input type="text" value=""/>	set (A,B)	<input type="checkbox"/>	<input type="checkbox"/>	<input type="checkbox"/>	<input type="checkbox"/>	set (A,B)
QSA	14-0	<input type="checkbox"/>	<input type="checkbox"/>	<input type="text" value=""/>	set (A,B)	<input type="checkbox"/>	<input type="checkbox"/>	<input type="checkbox"/>	<input type="checkbox"/>	set (A,B)

1. Participation is possible as annual subscription (participation in all tests of the year) and as participation in particular tests.
2. By ticking in the column *Continuous subscription*, your participation is registered as a permanent subscription. This is possible for annual subscriptions as well as for particular participations of tests. The continuous subscription starts with the receipt of the registration form. If we have not receive a cancellation until 4 weeks before the start of the first test of the year, the subscription is renewed for 1 year.
3. Additional sample material can be ordered. Please mind that the number of samples can be limited, in particular in the hair proficiency tests with authentic sample material.

Address form

Proficiency Testing Scheme

Fax + 49 6227 6909 178 or + 49 6227 6909 179

of the Society of Toxicological and Forensic Chemistry

GTFCh - Proficiency Testing 2017

ARVECON GmbH
Kleinfeldweg 52
69190 Walldorf
Germany

This form is a supplement to the order form. Please fill-in if you want to indicate a different address for the certificate and for sending the reports.

Lab code:

(as available)

E-mail address(es) for sending the reports and certificates

Please indicate up to 3 e-mail addresses

1:
2:
3:

Delivery address (samples and forms)

Name	_____
Institution	_____

Street	_____
ZIP / City	_____
Country	_____

Billing address

Name	_____
Institution	_____

Street	_____
ZIP / City	_____
Country	_____

Certificate address (address on the certificate)

Name	_____
Institution	_____

Street	_____
ZIP / City	_____
Country	_____

Report address (report is sent to this address)

Name	_____
Institution	_____

Street	_____
ZIP / City	_____
Country	_____

Contact person

Name	_____
Tel.	_____ Fax _____
E-mail	_____

Delivery within the EU

VAT.Id.no	_____
necessary for all foreign participants within the EU.	